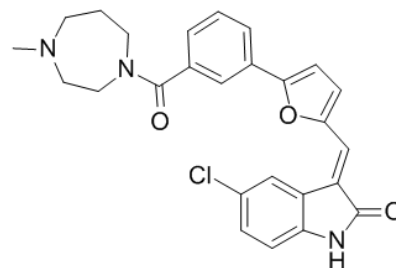


Product Name : CX-6258
Cat. No. : PC-45415
CAS No. : 1202916-90-2
Molecular Formula : C₂₆H₂₄ClN₃O₃
Molecular Weight : 461.9401
Target : Pim
Solubility : 10 mM in DMSO



Biological Activity

CX-6258 (CX6258) is a potent, selective, and orally efficacious **pan-Pim** inhibitor with IC₅₀ of 5/25/16 nM for Pim1/2/3, respectively.

CX-6258 exhibits in vitro synergy with chemotherapeutics and robust in vivo efficacy in driven tumor models.

CX-6258 also decreases steady state levels and half-life of NKX3.1 protein but not mRNA in prostate cancer cells.

References

Haddach M, et al. *ACS Med Chem Lett*. 2011 Dec 27;3(2):135-9.

Padmanabhan A, et al. *J Cell Biochem*. 2013 May;114(5):1050-7.

Rebello RJ, et al. *Clin Cancer Res*. 2016 Nov 15;22(22):5539-5552.

Caution: Product has not been fully validated for medical applications. Lab Use Only!

E-mail: tech@probechem.com